

# Transfer Case DCD

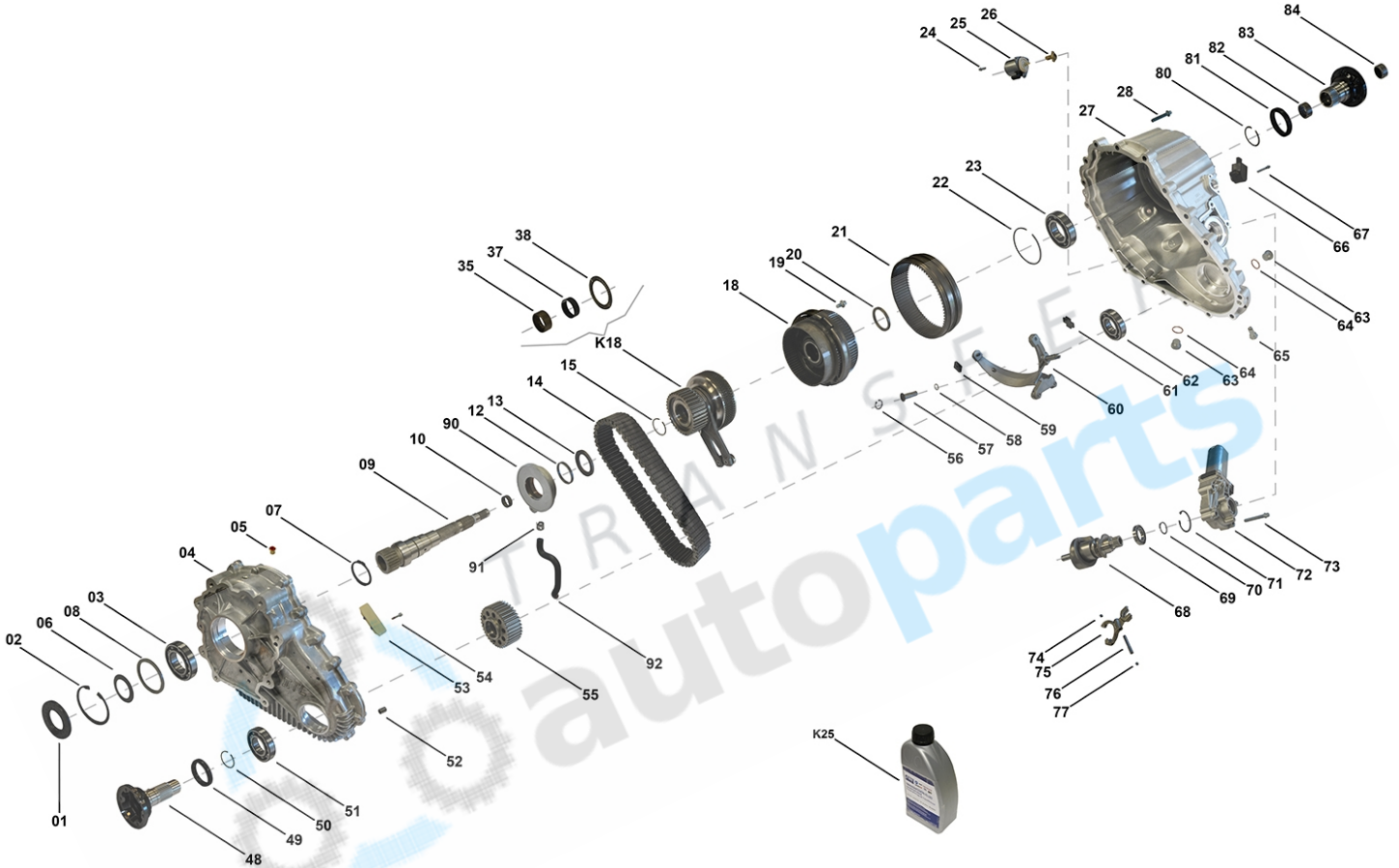
TC00269, TC00280

OEM No: A1642801200; A1662800800

## Brands

Brand	Modelseries
Mercedes-Benz	GL-Class; M-Class

## List of parts



Pos	Part number	OEM no	Quantity	Product name	Info
'I01	TC00269	A1642801200		OE References	A1642800900, A1642801200
'I02	TC00280	A1662800800		OE References	A1642800800, A1642801000, A1642801100, A1642801300, A1642801400, A1662800300, A1662800800
'K01	SP00972		1 piece	Bearing Kit	Contains position 03, 10, 23, 35, 37, 38, 51, 62, 69, 82, 84
'K02	SP00991		1 piece	Sealing Kit	Contains position 01, 49, 58, 64, 81
'K03	SP01203	A1645400188	1 piece	Actuator Kit	Contains position 72, 73
'K04	SP00989	A1642820082	1 piece	Flange Kit Front	Contains position 48, 49, 50

# Transfer Case DCD

TC00269, TC00280

OEM No: A1642801200; A1662800800

## List of parts

Pos	Part number	OEM no	Quantity	Product name	Info
'K05	SP00085	A1642870045	1 piece	Flange Kit Rear	Contains position 80, 81, 82, 83, 84  Information for DCD: Used in A1642801200  Information for DCS: Used in A2512801300
'K05	SP00988	A1642820182	1 piece	Flange Kit Rear	Contains position 80, 81, 82, 83, 84  Information for DCD: Used in A1662800800  Information for DCS: Used in A2512801700, A2512802700, A2512802800, A25152803100
'K06	SP00288		1 piece	Shift Fork Kit	Contains position 56, 57, 58, 59, 60
'K07	SP00273		1 piece	Shift Fork Kit	Contains position 74, 75, 76, 77
'K08	SP00075	A1642800058; IGF500011	1 piece	Solenoid Kit	Contains position 24, 25, 26
'K09	SP00857	A1645500055; IAB500191	1 piece	Sensor Kit	Contains position 66, 67
'K10	SP00194		1 piece	Sliding Block Kit	Contains position 53, 54
'K15	SP01014		1 piece	Oil Pump ASM	Contains position 90, 91, 92
'K18	SP00990		1 piece	Sprocket ASM	
01	SP00986	A0149971346	1 piece	Ring Sealing	
02	SP00317		1 piece	Locking Ring	Information for DCS: Used in A2512801300, A2512801400, A2512802700, A2512802800, A2512803100, A2512803200
03	SP00969		1 piece	Groove Ball Bearing	
04	Not available		1 piece	Housing Front	
05	SP00985	A0019980950	1 piece	Air Flue Acceptance	Information for DCS: Used in A2512800700, A2512800800, A2512800900, A2512801100, A2512801200, A2512801300, A2512801400, A2512801500, A2512801700, A2512802000
06	SP00984		1 piece	Disc Spring	
07	SP00312		1 piece	Retaining Ring	
08	Not available		1 piece	Shim	
09	SP00983		1 piece	Shaft Input	Information for DCS: Used in A1642801000, A1642801100, A1642801100, A1642801300, A1642801400, A1662800300, A1662800800
10	SP00200		1 piece	Needle Bearing	
12	SP00309		1 piece	Distance Washer Oil Pump	Information for ITC PLA: Used in IAB500240, IAB500241, IAB500243, IAB500244, IAB500280, LR006016, LR008206
13	SP00308		1 piece	Sealing Washer	
14	SP00084		1 piece	Chain	Information for DCD: Used in A1642801200
14	SP00655	HV098	1 piece	Chain	Information for DCD: Used in A1662800800  Information for ITC PLA: Used in IAB500240, IAB500241, IAB500243, IAB500244, IAB500280, LR006016, LR008206
15	SP00307		1 piece	Snap Ring	
18	SP00229		1 piece	Differential ASM	
19	Not available		6 pieces	Socket Screw	

# Transfer Case DCD

TC00269, TC00280

OEM No: A1642801200; A1662800800

## List of parts

Pos	Part number	OEM no	Quantity	Product name	Info
20	SP00251		1 piece	Spacer Ring	
21	SP00252		1 piece	Sliding Collar	
22	SP00256		1 piece	Circlip	Information for ITC PLA: Used in IAB500240, IAB500241, IAB500243, IAB500244, IAB500280, LR006016, LR008206
23	SP00257		1 piece	Groove Ball Bearing	
24	Only available in K08		3 pieces	Screw	
25	Only available in K08		1 piece	Solenoid	
26	Only available in K08		1 piece	Control Element	
27	Not available		1 piece	Housing Rear	
28	SP00314		19 pieces	Tapping Screw	
35	SP00306		1 piece	Needle Sleeve	
37	SP00133		1 piece	Needle Ring Axial	
38	SP00134		2 pieces	Needle Ring Axial	
48	Only available in K04		1 piece	Flange Front	
49	SP00168	A0159975845	1 piece	Ring Sealing	
50	SP00319	A0019941440	1 piece	Snap Ring	
51	SP00318		1 piece	Groove Ball Bearing	
52	SP00155		2 pieces	Pin	
53	Only available in K10		2 pieces	Sliding Block	
54	Only available in K10		4 pieces	Screw	
55	SP00304		1 piece	Sprocket	Information for ITC PLA: Used in IAB500240, IAB500241, IAB500243, IAB500244, IAB500280, LR006016, LR008206
56	Only available in K06		1 piece	Locking Ring	
57	Only available in K06		1 piece	Bolt Specific	
58	Only available in K02 & K06		1 piece	O-Ring	
59	SP00289		2 pieces	Sliding Block	
60	Only available in K06		1 piece	Shift Fork	
61	SP00287		1 piece	Magnet	Information for ITC PLA: Used in IAB500244, IAB500280, LR008206, LR023011, LR035617, LR045477, LR049160, LR052611, LR089531
62	SP00970		1 piece	Groove Ball Bearing	
63	SP00171	A0029900612; IYB500020	2 pieces	Plug	Information for ITC PLA: Used in IAB500240, IAB500241, IAB500243, IAB500244, IAB500280, LR006016, LR008206
64	SP00170	6000626090; 8201057777; IYF500030; TYF101070	2 pieces	Washer Sealing	Information for ITC PLA: Used in IAB500240, IAB500241, IAB500243, IAB500244, IAB500280, LR006016, LR008206
65	SP00286		1 piece	Adjustment	
66	Only available in K09		1 piece	Sensor	
67	Only available in K09		2 pieces	Tapping Screw	
68	SP01015		1 piece	Shaft ASM Actuator	
69	SP00267		1 piece	Groove Ball Bearing	
70	SP00269		1 piece	Locking Ring	
71	SP00268		1 piece	Retaining Ring	
72	Only available in K03		1 piece	Actuator	
73	Only available in K03		4 pieces	Tapping Screw	
74	Only available in K07		2 pieces	Caster	
75	Only available in K07		1 piece	Shift Fork	
76	Only available in K07		1 piece	Pin Magnet Shift Fork	

# Transfer Case DCD

TC00269, TC00280

OEM No: A1642801200; A1662800800

## List of parts

Pos	Part number	OEM no	Quantity	Product name	Info
77	Only available in K07		1 piece	Closing Cover	
80	SP00261	A0019941540	1 piece	Circlip	
81	SP00169	A0159975945	1 piece	Radial Seal Ring	
82	Only available in K01 & K05		1 piece	Needle Sleeve	
83	Only available in K05		1 piece	Flange Rear	
84	SP00265		1 piece	Needle Sleeve	
90	Only available in K15		1 piece	Pump ASM	
91	Only available in K15		1 piece	Clamp	
92	Only available in K15		1 piece	Suction Pipe	
	SP02000		1 piece	Sealant	Sealant SILICON BLACK (1pce = 300ml)

