

Transfer Case ATC500

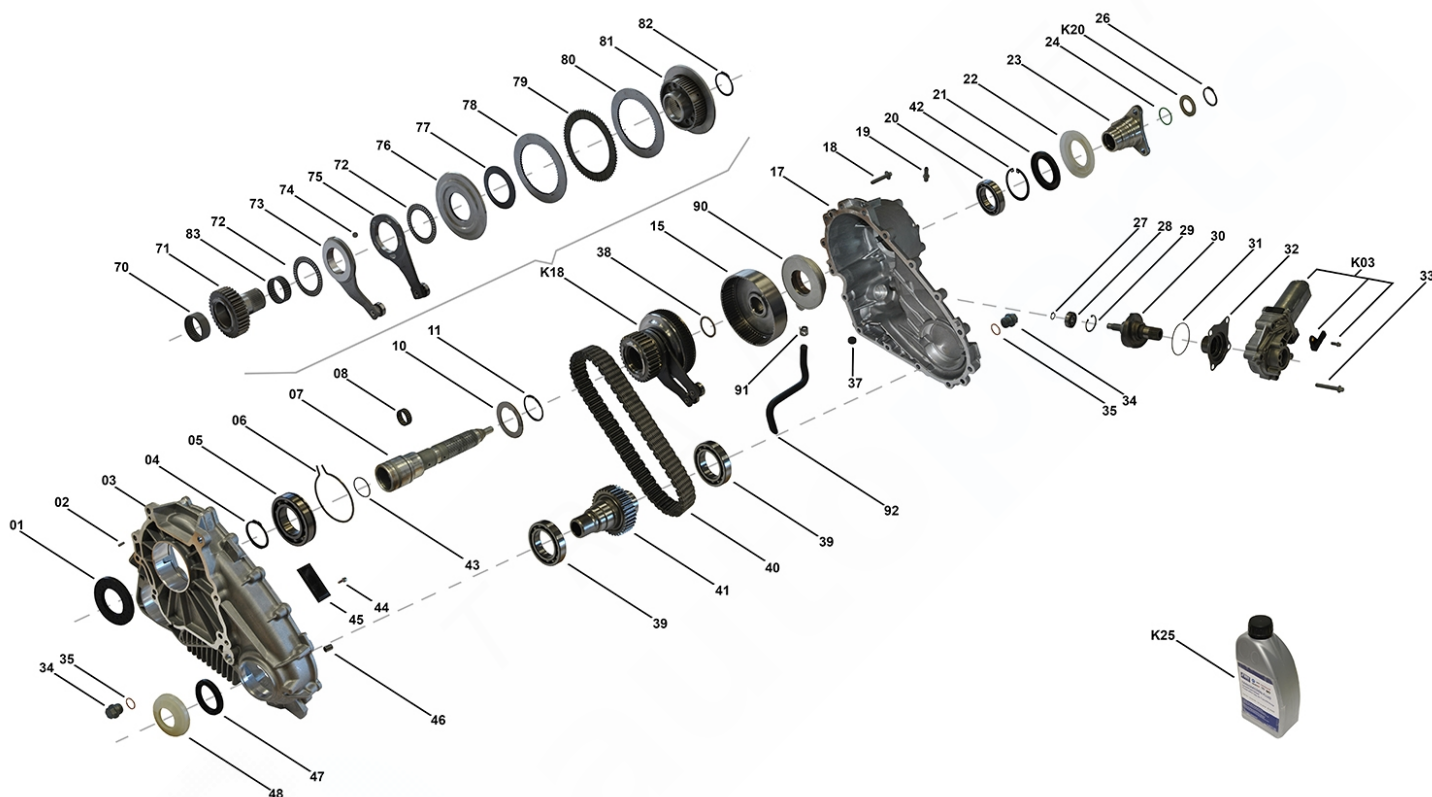
TC00039

OEM No: 27107555295; 27107555297

Brands

Brand	Modelseries
BMW	X5

List of parts



Pos	Part number	OEM no	Quantity	Product name	Info
'I01	TC00039	27107555295; 27107555297		OE References	27107526279, 27107535869, 27107555295, 27107555297
'K00	SP02034		1 piece	Repair Kit	Contains position K03, 01, 05, 08, 20, 21, 24, 26, 27, 28, 31, 32, 35, 38, 39, 40, 43, 44, 45, 47, 70, 72, 77, 78, 79, 80, 82, 83, 90, 91 Detailed information can be found in Categories "Repair Kit's"
'K01	SP00743		1 piece	Bearing Kit	Contains position 05, 08, 20, 39
'K02	SP00745		1 piece	Sealing Kit	Contains position 01, 21, 24, 31, 35, 43, 47
'K03	SP00097	27107566296	1 piece	Actuator Kit	Supplied with Code Resistor
'K10	SP00122		1 piece	Sliding Block Kit	Contains position 44, 45
'K15	SP00126		1 piece	Oil Pump ASM	Contains position 90, 91, 92
'K18	SP00146		1 piece	Sprocket ASM	
'K20	SP00114	27107537629	1 piece	Shim Set	Contains 16 different Shims with Dimensions from 2.1mm up to 3.6mm
01	SP00165	02C2D27145; 27107539262; 473524E000; 673002353	1 piece	Radial Sealing	

Transfer Case ATC500

TC00039

OEM No: 27107555295; 27107555297

List of parts

Pos	Part number	OEM no	Quantity	Product name	Info
02	SP00154		1 piece	Pin	
03	Not available		1 piece	Housing Front	
04	SP00160		1 piece	Retaining Ring	
05	SP00151		1 piece	Ball Bearing	
06	SP00140		1 piece	Retaining Ring	
07	SP00763		1 piece	Main Shaft ASM	Information for ATC400: Used in 27103455133, 27103455134
08	SP00200		1 piece	Needle Bearing	
10	SP00139		1 piece	Thrust Washer	
11	SP00138		1 piece	Retaining Ring	
15	SP00145		1 piece	Drum	Information for ATC400: Used in 27103455133, 27103455134
17	Not available		1 piece	Housing Rear	
18	SP00156		15 pieces	Tapping Screw	
19	SP00128		1 piece	Vent Pipe	
20	SP00149		1 piece	Ball Bearing	
21	SP00095	27107539265; 331401LA0A	1 piece	Radial Sealing	
22	SP00101	27107537663; 331411LA0A	1 piece	Slinger	
23	SP00104	27107539195	1 piece	Flange Rear	
24	SP00096	27107537631	1 piece	O-Ring	
26	SP00112	27107539525; 331381LA0A; 6000626080; 673002348	1 piece	Retaining Ring	
27	SP00157		1 piece	Retaining Ring	
28	SP00150		1 piece	Ball Bearing	
29	SP00158		1 piece	Retaining Ring	
30	SP00147		1 piece	Shaft Actuator Assy	
31	SP00153		1 piece	O-Ring	
32	SP00159		1 piece	Needle Sleeve	
33	SP00132	27107539410	4 pieces	Screw	
34	SP00120	27107571645	2 pieces	Plug	
35	SP00163	07119963308; 88896062; LR048842	2 pieces	Washer Sealing	Information for ITC PLA: Used in LR023011, LR035617, LR045477, LR049160, LR052611, LR089531
37	SP01315	05143630AA; A2102760098	1 piece	Magnet	
38	SP00125		1 piece	Thrust Washer	
39	SP00152		2 pieces	Ball Bearing	
40	SP00137	HV087	1 piece	Chain	
42	SP00203		1 piece	Retaining Ring	
43	SP00164	27107537630	1 piece	O-Ring	
44	Only available in K10		4 pieces	Screw	
45	Only available in K10		2 pieces	Sliding Block	
46	SP00155		2 pieces	Pin	
47	SP00099	27107539266	1 piece	Radial Sealing	
48	SP00102	27107539212	1 piece	Slinger	
70	SP00136		1 piece	Needle Sleeve	
71	Only available in K18		1 piece	Sprocket	
72	SP00134		2 pieces	Needle Ring Axial	
73	SP00394		1 piece	Actuator Ring	

Transfer Case ATC500

TC00039

OEM No: 27107555295; 27107555297

List of parts

Pos	Part number	OEM no	Quantity	Product name	Info
74	SP00302		5 pieces	Ball	
75	SP00395		1 piece	Actuator Ring	
76	SP00650		1 piece	Piston	
77	SP00299		4 pieces	Disk Spring	
78	Only available in K00 & K18		1 piece	Shim Set	Contains Shim Dimensions 3.40, 3.60, 3.80
79	SP00649		7 pieces	Torque Transfer Shim	
80	SP01587		8 pieces	Steel Plate	
81	Only available in K18		1 piece	Hub	
82	Only available in K00 & K18		1 piece	Retaining Ring	
83	SP00133		1 piece	Needle Ring Axial	
90	Only available in K00 & K15		1 piece	Oil Pump	
91	Only available in K00 & K15		1 piece	Clamp	
92	Only available in K15		1 piece	Suction Pipe	
	OIL0005	00004330136; 00004330563; 83220397244; 83222409710; N052515B0; N052515B1	1 piece	Transmission Fluid	Shipment in 1 liter bottles. Fillgrade information please see Oil List.
	SP02000		1 piece	Sealant	Sealant SILICON BLACK (1pce = 300ml)